

Featured products catalog **2011**



1717 West Collins Avenue, Orange, CA 92867
Tel 800.346.3636 Tel 714.516.7979 Fax 714.516.7936

SybronEndo Europe, Basicweg 20, 3821 BR Amersfoort, The Netherlands
Tel +31 33 453 61 59 Fax +31 33 453 61 53 endo@sybronendo.com
sybronendo.com/eu

SybronEndo Australia, Unit 10/112-118 Talavera Road, North Ryde NSW 2113.
Tel 1800 052 030 Fax 02 8875 8175 sybronendoaustralia@sybrondental.com

Visit us online at sybronendo.com

SybronEndo. A better endo experience.

DIAGNOSTICS

- 2 Elements Diagnostic Unit
- Elements Apex Locator
- Mini Apex Locator
- Vitality Scanner 2006

SHAPE

- 3 Twisted Files
- 5 K3XF
- 6 K3
- Endo-Ring
- 7 LA Axxess Burs
- TCM Endo III
- 8 EndoTouch TC
- M4 Safety Handpiece
- Axxess Handpieces
- 9 K-Flex Files
- K-Files
- Pathfinder
- 10 Triple-Flex Files
- Hedstrom Files
- Pathfinder CS
- 11 Sterile K-Flex Files
- Sterile Hedstrom Files
- Reamers
- Barbed Broaches

CLEAN

- 12 SmearClear
- SlickGel ES

OBTURATION

- 13 RealSeal 1
- RealSeal SE Self-Etch Sealer
- 14 Soft-Core
- 15 RealSeal
- 16 K3 Gutta Percha
- TF Gutta Percha

OBTURATION

- 16 TF Paper Points
- Autofit Paper Points
- Tip Snip
- 17 System B Cordless
- 18 Elements Obturation Unit
- Needle Bending Tool
- .04 Plugger
- Hot Pulp Test Tip
- 19 System B Heat Source
- Buchanan Heat Pluggers
- Touch 'n Heat 5004
- 20 Buchanan Hand Pluggers
- Autofit Gutta Percha
- 21 Auxiliary Gutta Percha
- Standardized Gutta Percha
- Absorbent Points
- 22 Xpress Sealers
- Sealapex
- Tubli-Seal
- Tubli-Seal EWT
- Pulp Canal Sealer
- Pulp Canal Sealer EWT

ULTRASONICS

- 23 MiniEndo II
- Ultrasonic Tip Introductory Kit
- 24 The "4" Series Ultrasonic Tips
- Spreader Ultrasonic Tips
- BK-3 Ultrasonic Tips
- Specialty Ultrasonic Tips
- 25 UT Ultrasonic Tips
- SJ Ultrasonic Tips
- Diamond-Coated Ultrasonic Tips
- 26 CT Ultrasonic Tips
- RedStar Ultrasonic Tips
- File Adapter

Elements™ Diagnostic Unit and Apex Locator

- A Elements Diagnostic Unit** 973-0300
- A Elements Diagnostic Unit (without Satellite)** 973-0320
- B** File Clip 973-0310
- C** Bifurcated Probe 973-0307
- D** Crown Test Tip 973-0309
- (Diagnostic Unit only)
- E** Vitality Probe 973-0308
- (Diagnostic Unit only)
- F** Lip Hook (pkg of 5) 973-0313
- G** Elements Patient Lead Cord 973-0311
- (for use with Satellite)
- H** Satellite with Satellite Cord 973-0303
- I Elements Apex Locator** 973-0301
- Apex Locator (without Satellite) 973-0321
- Elements Patient Lead Cord 973-0304
- (without Satellite) *Not Pictured*
- Charge Adapter *Not Pictured* 973-0302
- Battery Pack *Not Pictured* 973-0305

The convenience and accuracy of a high quality pulp tester and apex locator in one system. What's more, the satellite display conveniently brings critical data into your field of vision.



Mini Apex Locator

SybronEndo's Mini Apex Locator delivers the power of apex location in the palm of your hand and offers a new level of accuracy at an affordable price.



- Mini Apex Locator** 973-0280
- Lead Wire (autoclavable) (pkg of 2) 973-0281
- Lip Hook (autoclavable) (pkg of 5) 973-0282
- Mini Probe (55mm long) (pkg of 2) 973-0120
- File Clip (autoclavable) (pkg of 3) 973-0283
- Long Probe (120mm long) (pkg of 2) 973-0121
- Disposable Sleeves (pkg of 16) 973-0284

Vitality Scanner 2006

The Vitality™ Scanner 2006 ensures dependable and pain-free pulp testing. This outstanding diagnostic tool is automatically controlled and features large digital readouts. It's the quick and easy solution for patient- and practice-friendly pulp testing.



- Vitality Scanner 2006** 973-0234
- Short Probe Tip 973-0232
- Long Probe Tip 973-0233
- Mini-Tip Kit 973-0231
- Lip Clip (pkg of 5) 973-0227
- Grounding Lead with Lip Clip 973-0226



TF – Twisted Files

TF® is produced with SybronEndo's proprietary R-Phase™ Technology, resulting in NiTi files that are 70% more flexible and 2-3 times more resistant to cyclic fatigue than other rotary files.* This special technology also enables TF to maintain the natural anatomy of the canal better than other files. TF preserves dentin and adds to the longevity of the post-RCT tooth.

Simple 3 File Technique

Most brands of NiTi files require 5, 6 or even more files per case. Not TF from SybronEndo. The TF Technique is just 3 files per case, perfectly matched to the type of tooth you're treating – 1 set for anteriors, another for premolars and molars. By reducing the number of files to just 3, we've taken much of the complexity out of root canal therapy. TF makes file selection simple, straightforward and easy.

Fast and Efficient

A simpler technique means more than just ease of use. Since doctors typically use 3 TF files per case, fewer files per treatment translates into less inventory, lower file cost per procedure, more time savings, and ultimately more predictable RCT.

*Data on file, Sybron Dental Specialties, Inc. Data from Gambarini G. Cyclic fatigue test and flexibility test.



Black Carrier Box — Individual File Size
(Available in .04, .06, .08, .10 & .12 tapers)



Blue Carrier Box — Large Assorted Files
(Contains .06, .08, & .10 tapers)



White Carrier Box — Small Assorted Files
(Contains .04, .06 & .08 tapers)

TF

Taper	Tip	23mm	27mm
.12	25	822-2253	
.10	25	822-0253	822-0257
.08	25	822-8253	822-8257
.06	35	822-6353	822-6357
.06	30	822-6303	822-6307
.06	25	822-6253	822-6257
.04	50	822-4503	822-4507
.04	40	822-4403	822-4407
.04	25	822-4253	822-4257

TF SMALL ASSORTED

822-4683 23mm	
Taper	Tip
.08	25
.06	25
.04	25

822-4687 27mm	
Taper	Tip
.08	25
.06	25
.04	25

TF LARGE ASSORTED

822-6803 23mm	
Taper	Tip
.10	25
.08	25
.06	25

822-6807 27mm	
Taper	Tip
.10	25
.08	25
.06	25

TF SMALL APICAL ASSORTED

822-8663 23mm	
Taper	Tip
.08	25
.06	30
.06	35

TF LARGE APICAL ASSORTED

822-6643 23mm	
Taper	Tip
.06	30
.06	35
.04	40

TF PROCEDURE PACKS ANTERIOR

822-3864 23mm		822-7864 27mm	
Taper	Tip	Taper	Tip
.08	25	.08	25
.06	30	.06	30
.04	40	.04	40

TF PROCEDURE PACKS POSTERIOR

822-3866 23mm		822-7866 27mm	
Taper	Tip	Taper	Tip
.08	25	.08	25
.06	25	.06	25
.06	30	.06	30

NEW!
TF Anterior and Posterior
3-File Procedure Packs

EASY AS 1, 2 & 3

SIMPLE TECHNIQUE • FEWER FILES • GREAT RESULTS

STEP 1

ANTERIOURS

.08	25
822-8253 (23mm)	
822-8257 (27mm)	

STEP 2

.06	30
822-6303 (23mm)	
822-6307 (27mm)	

STEP 3

.04	40
822-4403 (23mm)	
822-4407 (27mm)	

POSTERIOURS

.08	25
822-8253 (23mm)	
822-8257 (27mm)	

.06	25
822-6253 (23mm)	
822-6257 (27mm)	

.06	30
822-6303 (23mm)	
822-6307 (27mm)	

TF apical sizes
are packaged with
blue labels for easy
identification.



K3XF

Rotary Nickel Titanium File

K3XF – all the features of K3. And more!

K3™XF provides clinicians with the safety and self-centering features of the original K3, plus an extraordinary new level of flexibility and resistance to cyclic fatigue provided by our proprietary R-Phase™ Technology. K3XF is the ultimate in safety, flexibility and control for rotary file users looking for a stronger and more flexible file.

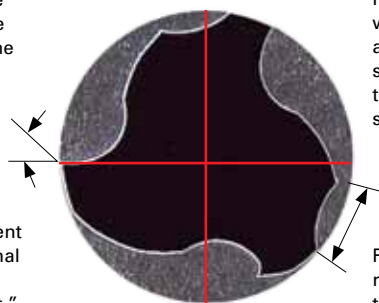
K3XF Nickel-Titanium Files (pkg of 6)

Taper	Tip	17mm	21mm	25mm	30mm
.10	25	823-0257	823-0251	823-0255	823-0250
.08	25	823-8257	823-8251	823-8255	823-8250
.06	50		823-6501	823-6505	823-6500
.06	45		823-6451	823-6455	823-6450
.06	40		823-6401	823-6405	823-6400
.06	35		823-6351	823-6355	823-6350
.06	30		823-6301	823-6305	823-6300
.06	25		823-6251	823-6255	823-6250
.06	20		823-6201	823-6205	823-6200
.04	50		823-4501	823-4505	
.04	45		823-4451	823-4455	
.04	40		823-4401	823-4405	823-4400
.04	35		823-4351	823-4355	823-4350
.04	30		823-4301	823-4305	823-4300
.04	25		823-4251	823-4255	823-4250
.04	20		823-4201	823-4205	823-4200

K3 and K3XF are engineered for efficiency

Positive rake angle provides the active cutting action of the K3 file.

The third radial land stabilizes and keeps the instrument centered in the canal and minimizes "over-engagement."



Reduced radial land with blade support adds peripheral strength to resist torsional and rotary stresses.

Radial land relief reduces friction on the canal wall.

AXCESS STAINLESS STEEL HANDLE –
Allows more working room.

HEAT TREATED WITH SYBRONENDO'S R-PHASE TREATMENT PROCESS –
Unmatched strength and flexibility.

THIRD RADIAL LAND –
Provides centered stability.

VARIABLE PITCH –
Provides the ultimate in control over other NiTi files.

SAFE-ENDED TIP –
Assists in following the canal shape while minimizing apical transportation.

See page 16 for matching K3/K3XF gutta percha.

K3

K3 Nickel-Titanium Files*

K3™ is a third-generation, triple-fluted, asymmetric endodontic file system. Designed to cut quickly, efficiently and safely, with unparalleled debris removal, the K3 addresses technical and procedural issues that no other ground-fluted instrument does. The K3 file has a varied pitch that allows debris to effectively channel coronally.

*Not available in all areas. Check with SybronEndo for availability.

K3 Procedure Packs

830-0621 17mm	830-0625 17mm	830-0421 17mm	830-0425 17mm
Taper	Tip	Taper	Tip
.10	25	.10	25
.08	25	.08	25
21mm	25mm	21mm	25mm
Taper	Tip	Taper	Tip
.06	40	.04	40
.06	35	.04	35
.06	30	.04	30
.06	25	.04	25

K3 G-Packs

830-9921 17mm	830-9925 17mm
Taper	Tip
.12	25
21mm	25mm
Taper	Tip
.10	25
.08	25
.06	25
.04	25
.02	25

K3 VTVT Packs

830-7721 21mm	830-7725 25mm
Taper	Tip
.10	25
.08	25
.06	35
.04	30
.06	25
.04	20

K3 Nickel-Titanium Files (pkg of 6)

Taper	Tip	17mm	21mm	25mm
.12	25	830-2257	830-2251	830-2255
.10	25	830-0257	830-0251	830-0255
.08	25	830-8257	830-8251	830-8255

Taper	Tip	21mm	25mm	30mm
.06	60	825-6601	825-6605	825-6600
.06	55	825-6551	825-6555	825-6550
.06	50	825-6501	825-6505	825-6500
.06	45	825-6451	825-6455	825-6450
.06	15-40 Asst	825-6021	825-6025	
.06	40	825-6401	825-6405	825-6400
.06	35	825-6351	825-6355	825-6350
.06	30	825-6301	825-6305	825-6300
.06	25	825-6251	825-6255	825-6250
.06	20	825-6201	825-6205	825-6200
.06	15	825-6151	825-6155	825-6150

.04	60	825-4601	825-4605	825-4600
.04	55	825-4551	825-4555	825-4550
.04	50	825-4501	825-4505	825-4500
.04	45	825-4451	825-4455	825-4450
.04	15-40 Asst	825-4021	825-4025	
.04	40	825-4401	825-4405	825-4400
.04	35	825-4351	825-4355	825-4350
.04	30	825-4301	825-4305	825-4300
.04	25	825-4251	825-4255	825-4250
.04	20	825-4201	825-4205	825-4200
.04	15	825-4151	825-4155	825-4150

.02	15-40 Asst	825-2021	825-2025	
.02	45	825-2451	825-2455	825-2450
.02	40	825-2401	825-2405	825-2400
.02	35	825-2351	825-2355	825-2350
.02	30	825-2301	825-2305	825-2300
.02	25	825-2251	825-2255	825-2250
.02	20	825-2201	825-2205	825-2200
.02	15	825-2151	825-2155	825-2150

K3 Intro Kit 825-0046



EndoRing Kit

825-0049

Contains:

- 1 – EndoRing Measuring Device (with 3 sizes of rings)
- 1 – Nondisposable Gel Well
- 4 – Disposable Gel Wells
- 3 – Foam Inserts

Foam Inserts (48 pieces – 24 blue/24 yellow) 825-0050
Disposable Gel Wells (48 pieces) 825-0051

LA Axxess Burs

Designed by Dr. L. Stephen Buchanan, the LA Axxess™ line angle instruments optimize your access preparations. Our new LA Axxess Diamond Bur, designed for use with high-speed handpieces, makes the job even easier. Non-cutting parabolic tips ensure perfectly cut line angle extensions without ledges or irregularities. These burs quickly, safely and accurately cut ideal filepaths through coronal tooth structure, reducing access time and minimizing the chances of file separation. In straight canals, our line angle instruments can be used to shape the coronal part of the canal in seconds. All the burs you need for initial access opening through restorations or crowns in one handy kit.



LA Axxess Kit 815-1400
(Kit contains 2 of each bur)



LA Axxess 2.0 Kit 815-1404
(Kit contains 2 of select burs)



LA Axxess Diamond Refills
(Shown from left to right)

- | | |
|---------------------------------------|----------|
| #2 Round Diamond (pkg of 5) | 815-1418 |
| Long Tapered Diamond (pkg of 5) | 815-1420 |
| Extra Long Tapered Diamond (pkg of 5) | 815-1421 |
| Football Diamond (pkg of 5) | 815-1419 |
| LA Axxess Diamond Bur (pkg of 6) | 815-1415 |

TCM Endo III

The microprocessor-controlled Nouvag TCM Endo III is a slow-speed, electric torque-control motor capable of achieving fast and easy root canal preparation. Speed and maximum torque levels are preselectable and constantly controlled by the TCM Endo III control unit. The TCM Endo III is compatible with the TF and K3 instruments as well as most NiTi rotary systems. Handpiece sold separately.

- | | |
|----------------------------------|----------|
| TCM Endo III, 110v | 815-9113 |
| TCM Endo III, 220v | 815-9114 |
| TCM Endo III, 220v Great Britain | 815-9115 |
| TCM Endo III Electric Motor Only | 815-9116 |
| TCM Endo III Foot Pedal | 815-9117 |
| Shaping Block (pkg of 5) | 815-9021 |



EndoTouch TC

Small, light and powerful, the cordless EndoTouch TC delivers 5 torque settings and 9 preset speeds, giving the clinician total control during instrumentation. Combined with TF or K3 rotary nickel-titanium files, it is the most advanced system available.

Features

- No cord or foot pedal
- Small, lightweight and comfortable
- Five torque settings
- Nine speed options available
- Auto-reverse
- Quick-charge battery

- | | |
|-------------------|----------|
| Endotouch TC 110v | 815-9122 |
| Endotouch TC 220v | 815-9123 |

M4 Safety Handpiece

The watch-winding, oscillating movement of the M4 Safety® Handpiece keeps the instrument “floating” in the canal. The operator controls coronal and apical pressure, while the M4 smoothly and efficiently “glides” the endo instrument through the canal. That’s the “safety” in the M4 Handpiece.



M4 Safety Handpiece E-Type 25846

Axxess Handpieces

SybronEndo handpieces are compatible with all manufacturers’ e-type couplings and are ideal for TF, K3, Quantec and other rotary files. The Axxess handpiece provides 5mm of additional clearance (when used with Axxess files such as K3) to ease work in tight posterior regions and will also accept standard rotary files. The 18:1 handpiece is perfect for rotary NiTi use and is available with a variety of heads.

- | | |
|---|----------|
| 18:1 Axxess Spring-Head Handpiece | 815-9016 |
| 18:1 Axxess Latch-Head Handpiece* | 815-9010 |
| 18:1 Axxess Push-Button-Head Handpiece* | 815-9008 |



*Not available in Europe.



K-Flex Files



K-Flex® Files feature a unique rhomboid design, which provides a short axis for flexibility while maintaining cross-sectional strength. K-Flex is more flexible than conventional “K” files of comparable size, particularly in sizes #30 and above, which facilitates the negotiation of curved canals and their preparation with minimal potential for ledging and perforating.

K-Flex Files (pkg of 6)

Size	21mm	25mm	30mm
80		15174	15258
70		15170	15254
60	15334	15166	15250
55	15330	15162	15246
50	15326	15158	15242
45	15322	15154	15238
40	15318	15150	15234
35	15314	15146	15230
30	15310	15142	15226
25	15306	15138	15222
20	15302	15134	15218
15	15298	15130	15214
10	15294	15126	15210
08	15290	15122	15206
06	60120	60144	60193
15-40 Asst	821-4021	821-4025	821-403
45-80 Asst		821-4125	821-413



K-Files



The K-File is the strongest of the handfiles, less separation potential. K-Files can bypass obstructions with far greater ease.

K-Files (pkg of 6)

Size	21mm	25mm	30mm
80	06026	06099	06170
70	06024	06085	06166
60	06023	06077	06163
55	06022	06076	06162
50	06021	06075	06161
45	06020	06074	06160
40	06019	06069	06159
35	06016	06067	06157
30	06015	06066	06156
25	06014	06065	06155
20	06005	06064	06153
15	06004	06063	06152
10	06003	06062	06151
08	14127	14128	14129
06	62249	62250	62251
15-40 Asst	821-8021	821-8025	821-8030
45-80 Asst	821-8121	821-8125	821-8130

Pathfinder

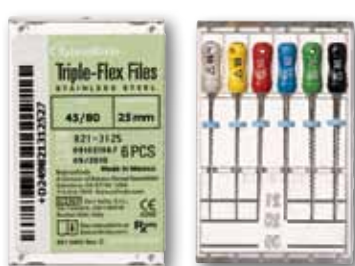
Stainless steel Pathfinder™ instruments feature a minimal taper and are used for negotiating difficult or calcified canals.



Pathfinder (pkg of 6)

21mm	25mm
17023	17017

Triple-Flex Files



Triple-Flex® Files are triangular-bladed, stainless steel instruments designed for flexibility with integrity. The twisted flutes allow aggressive cutting and debris removal you demand without sacrificing the instrument's inherent stability. Unlike round blades that have flutes ground in, Triple-Flex Files are highly breakage-resistant, even in the most stressful situations.

Triple-Flex Files (pkg of 6)

Size	21mm	25mm	30mm
80	25941	25957	25973
70	25940	25956	25972
60	25939	25955	25971
55	25938	25954	25970
50	25937	25953	25969
45	25936	25952	25968
40	25935	25951	25967
35	25933	25949	25965
30	25932	25948	25964
25	25931	25947	25963
20	25930	25946	25962
15	25929	25945	25961
10	25928	25944	25960
08	25927	25943	25959
15-40 Asst	821-3021	821-3025	821-3030
45-80 Asst	821-3121	821-3125	821-3130

- ◆ K-FLEX FILES
- △ TRIPLE-FLEX FILES
- K-FILES
- HEDSTROM FILES
- ▲ REAMERS

Hedstrom Files



Hedstrom Files are ground from stainless steel wire. The flute depth increases with the taper,

Hedstrom Files (pkg of 6)

Size	21mm	25mm	30mm
70	12796	11354	13278
60	12793	11353	12841
55	12790	11352	12838
50	12787	11351	12835
45	12784	11350	12832
40	12781	11349	12829
35	12778	11348	12826
30	12775	11347	12823
25	12772	11346	12820
20	12769	11345	12817
15	12766	11344	12814
15-40 Asst	12809	11359	13291
45-80 Asst	12810	11360	13292

Pathfinder CS



Pathfinder® CS instruments feature the same minimal taper as stainless steel Pathfinders but are made with carbon steel to help negotiate difficult or calcified canals faster and more efficiently.

Pathfinder CS (pkg of 6)

Size	Handle	19mm	21mm	25mm
K1	Dark Brown	22935	22936	23465
K2	Orange	22937	22938	23467



Sterile K-Flex and Hedstrom Files

SybronEndo now offers some of our most popular stainless steel hand files, K-Flex and Hedstrom, in new sterile packs. Our sterile handfiles will help doctors reduce preparation time, lower sterilization costs and ensure patient safety from contaminated files. Safe for your patients, convenient for you and perfect for all endodontic practitioners.

Size	21mm	25mm
40	62112	62201
35	62110	62200
30	62109	62198
25	62108	62197
20	62106	62190
15	62105	62182
10	62104	62174
08	62102	62173
06	62101	62170
15-40 Asst	62118	62217

Size	21mm	25mm
50		62615
45		62614
40	62457	62613
35	62456	62612
30	62455	62593
25	62454	62592
20	62453	62591
15	62452	62588
15-40 Asst	62449	62623

Reamers

Reamers are made from stainless steel wire that is ground to a triangular shape and twisted.



Size	21mm	25mm	30mm
45	06040	06132	
40	06038	06131	
35	06034	06127	
30	06033	06126	
25	06032	06120	
20	06031	06112	
15	06030	06111	
10	06029	06110	
08	14133	14134	
06	62252	62253	62254
15-40 Asst	821-2021	821-2025	

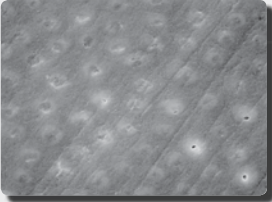
Barbed Broaches

Barbed Broaches are 21mm in length and come presterilized.

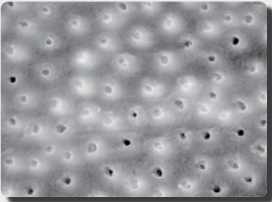


Barbed Broaches (pkg of 30)	
Size	
XXXF	17008
XXF	17009
XF	17010
F	17011
M	17012
C	17013
Assorted (10 ea: XXXF, XXF, XF)	17014
Assorted (10 ea: F, M, C)	17015

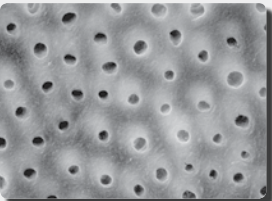
SmearClear



5.25% NaOCl



17% EDTA



SmearClear

Photos (200x) show decimal tubules after instrumentation, a NaOCl soak and further 1-minute soak in the respective irrigant. Photos and study courtesy of Drs. J. Jantararat, K. Yanpiset and C. Hamrattisai.

Successful endodontic therapy demands a clean and clear root canal system. SmearClear's enhanced EDTA formulation addresses this issue by consistently removing the smear layer and leaving the dentinal tubules clear of organic matter. The practitioner will recognize an increase in the efficacy of adhesives as well as an assist in the 3-dimensional obturation of the root canal system.

SmearClear® Liquid Refill
973-1002



SlickGel ES

SlickGel™ ES is specially formulated water-based suspension to aid in the negotiation of root canals by endodontic instruments. Each MicroDose® polytube contains EDTA that chelates calcifications in the root canal system. Sodium hypochlorite irrigants react with SlickGel ES's urea peroxide to produce vigorous bubbling action that helps flush debris from the root canal system.

SlickGel ES pack
12 MicroDose polytubes (1ml ea)



SlickGel™ ES

RealSeal 1



RealSeal 1 Bonded Obturator™ is the next generation in carrier-based delivery systems. All the components of RealSeal 1— sealer, filler and core – are resin-based materials and bond with each other to form a superior seal. Creating a true chemical bond when these materials contact, this proven technology provides superior leakage prevention.¹ As an added benefit, this system’s core is engineered to be easily discernable on a radiograph from the Resilon filling material that coats it.

An obturation system has one primary function – sealing the canal. RealSeal 1 creates a superior seal, preventing leakage and re-infection. In an independent blind study conducted at the University of Rome, the RealSeal 1 Obturation System resisted leakage 6 times better than GP obturation systems tested and nearly 10 times better than the Thermafil® system.*

1. "A Fluid Filtration Comparison of Gutta-Percha Versus Resilon: A New Soft Resin Obturation System." Stratton et al., U.S. Army Dental Activity, Fort Bragg, NC. Abstract: #OR20, JOE, Vol. 31(3), March 2005.

*Data on file.



Oven



Intro Kit



RealSeal SE Self-Etch Sealer

- Sealer syringe (pkg of 1) 972-2012
- Mixing Tips (pkg of 12) 972-2011

RealSeal 1 — Intro Kit 972-2000

- RealSeal SE Self-Etch Sealer (4ml syringe)
- Small Plastic Practice Block
- Large Plastic Practice Block
- 1 pack each of #25, #30, #35 Verifiers
- 1 pack each of #25, #30, #35 Obturators
- Instructions, DVD, Technique Guide

RealSeal 1 — Oven 972-2019

- Oven, Instructions

RealSeal 1 — Obturators (pkg of 6)

- | | |
|-----|----------|
| #20 | 972-2020 |
| #25 | 972-2025 |
| #30 | 972-2030 |
| #35 | 972-2035 |
| #40 | 972-2040 |
| #45 | 972-2045 |
| #50 | 972-2050 |
| #55 | 972-2055 |
| #60 | 972-2060 |
| #70 | 972-2070 |
| #80 | 972-2080 |
| #90 | 972-2090 |

RealSeal 1 — Verifiers (pkg of 6)

- | | |
|-----|----------|
| #20 | 972-2120 |
| #25 | 972-2125 |
| #30 | 972-2130 |
| #35 | 972-2135 |
| #40 | 972-2140 |
| #45 | 972-2145 |
| #50 | 972-2150 |
| #55 | 972-2155 |
| #60 | 972-2160 |
| #70 | 972-2170 |
| #80 | 972-2180 |
| #90 | 972-2190 |

Soft-Core

Soft-Core’s carrier is 30% thinner than Thermafil®, allowing greater flexibility to navigate curved canals. A thinner core means more gutta percha for denser fills every time. And with just one universal taper size, you can greatly reduce and simplify your carrier inventory. Soft-Core® is made with the most advanced Alpha Phase gutta percha available, ensuring excellent flow ability, adhesive qualities and superior sealing capabilities. In a recent university study, Soft-Core had 40% less microleakage than Thermafil.*

Soft-Core Intro Kit 972-3000

Contains: 1 Soft-Core Oven, 3 packs each of #20, #25, #30, #35 Obturators (pkg of 6), 2 packs each of #20, #25, #30, #35 Size Verifiers (pkg of 6), 1 pack of #1 LA Axxess Stainless Steel Burs (pkg of 6).

Soft-Core Oven 972-3002

The all new Soft-Core Oven provides a simple and consistent way to completely heat up to 4 Soft-Core Obturators at once.

#1 LA Axxess Stainless Steel Bur (pkg of 6) 815-1401

Soft-Core Size Verifiers (pkg of 6)

- | | | | |
|-----|----------|-----|----------|
| #20 | 972-3220 | #45 | 972-3245 |
| #25 | 972-3225 | #50 | 972-3250 |
| #30 | 972-3230 | #55 | 972-3255 |
| #35 | 972-3235 | #60 | 972-3260 |
| #40 | 972-3240 | | |

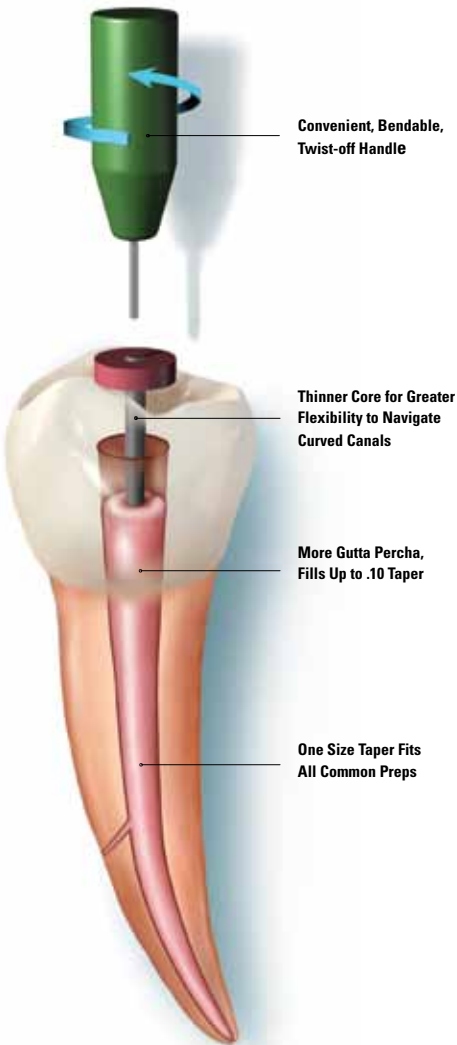
Soft-Core Obturators (pkg of 6)

- | | | | |
|-----|----------|-----|----------|
| #20 | 972-3020 | #45 | 972-3045 |
| #25 | 972-3025 | #50 | 972-3050 |
| #30 | 972-3030 | #55 | 972-3055 |
| #35 | 972-3035 | #60 | 972-3060 |
| #40 | 972-3040 | | |

Soft-Core Obturator Economy Pack (pkg of 36)

- | | | | |
|-----|----------|-----|----------|
| #20 | 972-3120 | #45 | 972-3145 |
| #25 | 972-3125 | #50 | 972-3150 |
| #30 | 972-3130 | #55 | 972-3155 |
| #35 | 972-3135 | #60 | 972-3160 |
| #40 | 972-3140 | | |

*Data on file.



Soft-Core Intro Kit

RealSeal

RealSeal™ is a Resilon®-based, endodontic filling material that combines the familiar handling characteristics of gutta percha with the proven technology of superior leakage prevention.¹ Because RealSeal is applied in the same way as gutta percha, adapting it to your current system is as seamless as the seal it creates.

Features and Benefits

- **Leak-Resistant.** Coronal and apical leakage is substantially reduced.
- **Technique-Compatible.** Switching from gutta percha to the RealSeal system is simple.*
- **Retreatable.** Like gutta percha, RealSeal is retreatable with solvent and/or heat.
- **Radiopaque.** Just like your current method of obturation, detection is not a problem.
- **Versatility.** Available in points, pellets and EOU cartridges.

*Always refer to product instructions before use.

1. "A Fluid Filtration Comparison of Gutta-Percha Versus Resilon: A New Soft Resin Obturation System." Stratton et al., U.S. Army Dental Activity, Fort Bragg, NC. Abstract: #OR20, JOE, Vol. 31(3), March 2005.



RealSeal SE Self-Etch Sealer

Sealer syringe (pkg of 1)	972-2012
Mixing Tips (pkg of 12)	972-2011



RealSeal Refills

Pellets (pkg of 100)	972-2004
Root Canal Sealant (w/12 mixers)	972-2010
3 ml Thinning Resin	972-2006
6 ml Primer	972-2007
Mixing Wells (pkg of 25)	972-2008

Accessory Points (pkg of 100)

XF (X-Fine)	972-2301
FF (Fine-Fine)	972-2302
MF (Medium-Fine)	972-2303
F (Fine)	972-2304
FM (Fine-Medium)	972-2305
M (Medium)	972-2306
L (Large)	972-2307
Assorted (XF-FF-MF-F-FM-M) (pkg of 120)	972-2310

Autofit Points (pkg of 50)

.04 Taper	972-2311
.06 Taper	972-2312
.08 Taper	972-2313
.10 Taper	972-2314
.12L Taper (1.35mm max dia)	972-2315
.12S Taper	972-2316
Assorted Pack Taper (.06 – .12 Taper)	972-2320

RealSeal Kits

Kits contain: Root Canal Sealant (with 12 mixing tips), 3 ml Thinning Resin, 6 ml Primer, Mixing Wells (25) and Applicator Brushes (25)

RealSeal Intro Kit 972-2100

- .04 Taper #15 – #40 (20/per size)
- .06 Taper #15 – #40 (20/per size)

RealSeal .02 Taper Kit 972-2102

- .02 Taper #15 – #40 (20/per size)
- Accessory Points (20/per size)

.02 Taper Points (pkg of 100)

Size #20	972-2220	Size #50	972-2250
Size #25	972-2225	Size #55	972-2255
Size #30	972-2230	Size #60	972-2260
Size #35	972-2235	Size #70	972-2270
Size #40	972-2240	Size #80	972-2280
Size #45	972-2245		
Assorted Sizes #15 – #40 (pkg of 120)	972-2201		
Assorted Sizes #45 – #80 (pkg of 120)	972-2202		
Assorted Sizes #90 – #140 (pkg of 120)	972-2203		

.04 Taper Points (pkg of 50)

Size #20	972-2420	Size #35	972-2435
Size #25	972-2425	Size #40	972-2440
Size #30	972-2430	Size #45	972-2445
Assorted Sizes #15 – #40 (pkg of 120)	972-2401		

.06 Taper Points (pkg of 50)

Size #20	972-2620	Size #35	972-2635
Size #25	972-2625	Size #40	972-2640
Size #30	972-2630	Size #45	972-2645
Assorted Sizes #15 – #40 (pkg of 120)	972-2601		

Autofit Backfill Points (pkg of 60)

F (Fine)	972-2321
FM (Fine-Medium)	972-2322
M (Medium)	972-2323
ML (Medium-Large)	972-2324

K3/K3XF Gutta Percha

K3 Gutta Percha (pkg of 50)

Taper	Tip				
.06	45	825-0645	.04	45	825-0445
.06	40	825-0640	.04	40	825-0440
.06	35	825-0635	.04	35	825-0435
.06	30	825-0630	.04	30	825-0430
.06	25	825-0625	.04	25	825-0425
.06	20	825-0620	.04	20	825-0420
.06	20-40 Asst	825-0600	.04	20-40 Asst	825-0400
.06	Feather Tip	825-0048	.04	Feather Tip	825-0047



Autofit Paper Points

Developed by Dr. L. Stephen Buchanan, Autofit Paper Points™ are an integral part of the Autofit system. Various sized tapers are color-coded for easy identification and will fit perfectly into Greater Taper preparations.

Greater Taper Paper Points (pkg of 100)

Taper	
.12	972-0115
.10	972-0114
.08	972-0113
.06	972-0112
.04	972-0111
Assorted	972-0110



Tip Snip

Using a measurement dial, the Tip Snip™ flush cuts gutta percha to the apex size you need.

Tip Snip 815-9042



TF Gutta Percha and Paper Points (presterilized) have been made specifically for use with the TF Rotary NiTi Files.

TF Gutta Percha (pkg of 100)

Taper	Tip	
.12	25	822-1225
.10	25	822-1025
.08	25	822-0825
.06	25	822-0625
.04	25	822-0425
.04-.12 Asst	25	822-0010

TF Paper Points (pkg of 100)

Taper	
.12	822-0002
.10	822-0001
.08	822-0008
.06	822-0006
.04	822-0004
.04-.12 Asst	822-0000

System B Cordless

System B™ Cordless Fill Unit

Light weight and easy to use, the Fill unit accurately moves filling material apically to create a 3-dimensional fill. The ergonomic hand piece allows for controlled extrusion of either RealSeal™ or traditional gutta percha.



System B Cordless Pack Unit

The versatile Pack unit features 360° one touch activation that heats instantly for optimal safety, accessibility and control. The lightweight unit is perfect for single motion down pack and creating post space.



System B Cordless Charger

The charger unit provides maximum convenience. This two-battery charging station is compact and recharges the System B interchangeable batteries in just 2 hours.



System B Cordless Pack Device 973-2000
Contains: Pack device, 2 Tips (Fine, Fine Medium), charger, 2 batteries, stand

System B Cordless Fill Device 973-2002
Contains: Fill device, 3- 23ga & 3-25ga needles, charger, 2 batteries, stand, cleaning accessories

Pack Tips	
Fine, Fine Medium (1 of each Tip)	973-2010
Extra Fine Tip (1 Tip)	973-2011
Fine Tip (1 Tip)	973-2012
Fine Medium Tip (1 Tip)	973-2013
Medium Tip (1 Tip)	973-2014
Medium Large Tip (1 Tip)	973-2015

Fill Needles	
Fill Needles Asst (3 each 23ga, 25ga)	973-2020
23ga Fill Needles (pkg of 6)	973-2021
25ga Fill Needles (pkg of 6)	973-2022

Accessories	
Charging Base Kit	973-2050
<i>Contains: USB cord and Charging Base</i>	
USB Charging Cord	973-2052
Battery	973-2054
AC Adaptor Kit	973-2056
<i>Contains: AC adaptor, power cord and International plugs</i>	
Stand for Pack/Downpack	973-2058
Stand for Fill/Extruder	973-2060
Heat Insulator (pkg of 5)	973-2062
Accessory Tool Kit	973-2064
<i>Contains: 1 Multi-tool, 2 brushes</i>	
Plunger w/installed Plunger head	973-2066
Plunger Head Kit	973-2068
<i>Contains: 5 Plastic Plunger Heads & screws</i>	
High Flow Gutta Percha (100 pellets)	973-2030
Regular Flow Gutta Percha (100 pellets)	973-2035
RealSeal (100 pellets)	972-2004

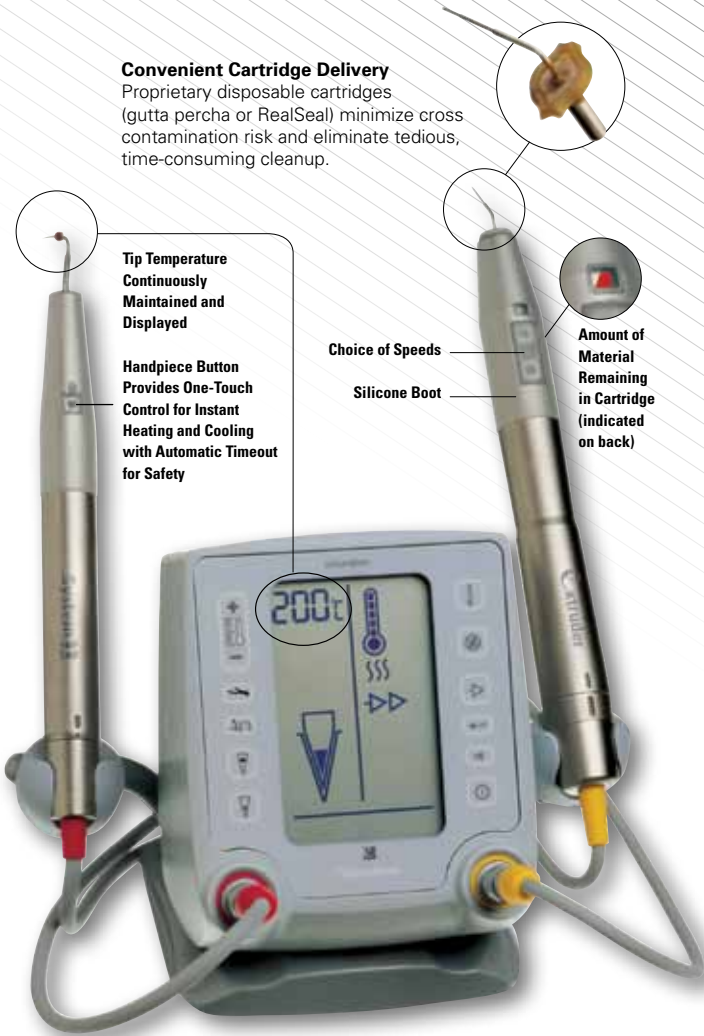
Elements Obturation Unit

The Elements Obturation Unit™ combines our System B™ technology with a motor-driven extruder handpiece to make obturation efficient, predictable, and accurate. From downpack to backfill, the Elements Obturation Unit puts the Continuous Wave of Condensation Technique into one simple-to-operate device that takes up only 1/3 the space of 2 separate machines.

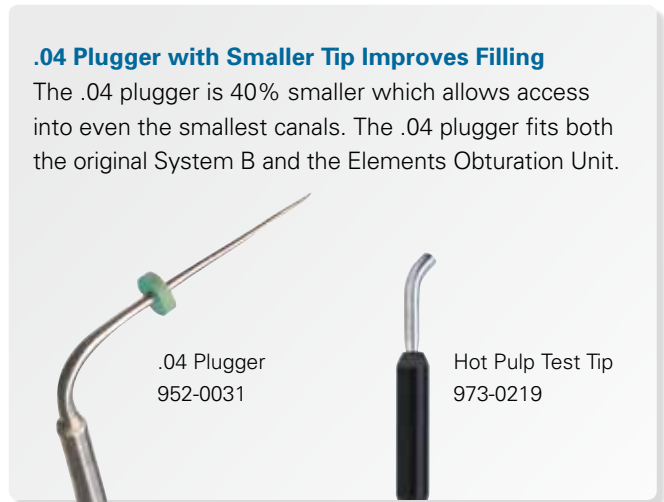
Elements Obturation Unit	973-0322
Obturation Unit (w/o Handpieces)	973-0325
Extruder Handpiece (w/2 Shields)	973-0326
System B Handpiece (w/2 Shields)	973-0327
Extruder Handpiece Silicone Boots (pkg of 2)	973-0329
System B Handpiece Silicone Boots (pkg of 2)	973-0330
Extruder Handpiece Shield (pkg of 2)	973-0331
System B Handpiece Shield (pkg of 2)	973-0332
Power Supply (Transformer)	973-0333
AC Power Cord, US	973-0334
AC Power Cord, Europe	973-0335
AC Power Cord, UK	973-0336

Elements Obturation Cartridges (pkg of 10)	
Gutta Percha	
Gauge 20 (medium body)	972-1001
Gauge 20 (heavy body)	972-1004
Gauge 23 (medium body)	972-1002
Gauge 23 (heavy body)	972-1005
Gauge 25 (light body)	972-1003

RealSeal	
Gauge 20	972-2001
Gauge 23	972-2002



Needle Bending Tool 973-0337



.04 Plugger 952-0031

Hot Pulp Test Tip 973-0219

.04 Plugger with Smaller Tip Improves Filling

The .04 plugger is 40% smaller which allows access into even the smallest canals. The .04 plugger fits both the original System B and the Elements Obturation Unit.



System B Heat Source

SybronEndo is the industry leader in endodontic warm obturation techniques. The System B™ Heat Source provides clinicians with unequalled convenience, reliability, and accuracy. Dial in the temperature you want and it will maintain it consistently throughout the procedure. With SybronEndo’s rechargeable battery and charge adapter, you will get at least 1 hour of continuous operation. The System B also accepts SybronEndo’s Touch ‘n Heat tips.

System B Heat Source, 110v	952-0001
System B Charge Adapter, 110v*	973-0222
Handpiece Assembly for System B	952-0008
Pinvise Nut with Contact Spring*	973-0224
Small Pinvise Nut Only*	973-0245
Plastic Practice Blocks for System B	952-0024
Contact Clip (pkg of 2)*	951-0008

*Also used with Touch n’ Heat.

Buchanan Heat Pluggers

These high-quality pluggers have a shape that closely matches the final root canal preparation, maximizing condensation forces on the softened obturation material without placing undue stress on the root canal system. Because the Elements Obturation Unit and the System B Heat Source provide an exact temperature throughout the procedure, the Buchanan Pluggers do not over-soften the obturation material, and the warm mass fills lateral canals as easy as it seals apically. When you disengage the heat, the pluggers cool almost instantly and separate easily from the condensed material.

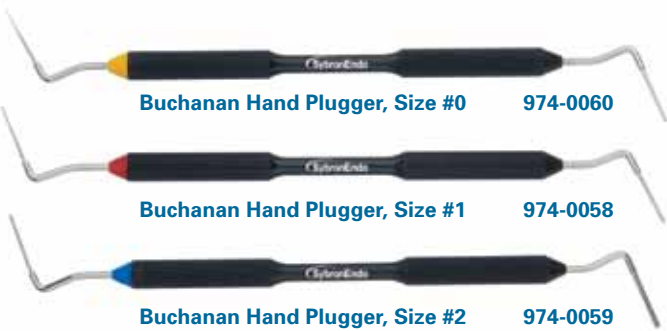
Buchanan Pluggers (pkg of 5) **952-0003**

Individual Pluggers



Buchanan Hand Pluggers

Featuring both a tapered nickel-titanium end and a stainless steel end, Buchanan Hand Pluggers can be used in any common obturation technique, including warm and cold condensation. The pluggers are also ideal for backfilling canals. Use the color-coded NiTi end for finishing off condensation procedures in even the most radically curved canals. Either end condenses and controls the movement of gutta percha under pressure. In addition, the Buchanan Hand Pluggers are fabricated of the highest grade materials for excellent durability and sterilization.



Autofit Gutta Percha

SybronEndo’s radiopaque gutta percha is the time-proven fill for your root canal therapies.

Autofit Greater Taper Gutta Percha

Developed by Dr. L. Stephen Buchanan, Autofit® gutta percha Greater Taper cones are designed to match canals shaped with Greater Taper files. Autofit cones have a parallel shank that is tapered to a point.

Assorted .06-.12	972-0100
.12L (1.35mm max. diameter)	972-0105
.12 (.98mm max. diameter)	972-0107
.10	972-0104
.08	972-0103
.06	972-0102
.04	972-0101

Autofit Backfill Gutta Percha

Autofit Backfill gutta percha cone sizes directly correspond with the sizes of the Buchanan Heat Pluggers. Once the initial downpack is complete, backfill cones perfectly fill the plugger void.

PKG OF 60	
Backfill Fine	972-0020
Backfill Fine-Medium	972-0021
Backfill Medium	972-0022
Backfill Medium-Large	972-0023

Autofit Featured Tip Gutta Percha (Nonstandard)

Autofit Nonstandard cones have a parallel shank that is tapered to a feather tip.

PKG OF 100	
Fine-Fine	952-0010
Medium-Fine	952-0011
Fine	952-0012
Fine-Medium	952-0013
Medium	952-0014
Medium-Large	952-0015
Large	952-0016

Touch ‘n Heat 5004

Touch ‘n Heat™ patented autoclavable tips are internally heated so that the heat is concentrated at the end where it’s needed most.

Touch ‘n Heat 5004, 110v	973-0212
Pinvise Nut with Contact Spring*	973-0224
Small Pinvise Nut Only*	973-0245
Charge Adapter, 110 V*	973-0222



Auxiliary Gutta Percha

Auxiliary Gutta Percha Points are readily softened by heat and flexible enough to be easily inserted into the canal.

Auxiliary Sizes	Box of 100*	6 Vials of 20
Xtra-Fine (XF)	12643	14376
Fine-Fine (FF)	13985	14377
Medium-Fine (MF)	13986	14378
Fine (F)	12644	14375
Fine-Medium (FM)	13987	14379
Medium (M)	12645	14380
Large (L)	12646 (pkg of 50)	14381
Assorted (XF, FF, MF, F, FM, M)	12647	14374

Standardized Gutta Percha

Standardized Gutta Percha Points are sized to correspond to the dimensions of SybronEndo standardized endodontic instruments. They are readily softened by heat and flexible to be easily inserted into the canal.

Standardized Sizes	Box of 100*	6 Vials of 20 US	6 Vials of 20 EU/ME
No. 15	12648	14382	61730
No. 20	12649	14383	61731
No. 25	12650	14384	61732
No. 30	12651	14385	61733
No. 35	12652	14386	61734
No. 40	12653	14387	61735
No. 45	12654	14388	61736
No. 50	12655	14389	61737
No. 55	12656	14390	61738
No. 60	12657	14391	61739
No. 70	12658	14392	61740
No. 80	12659	14393	61741
No. 15-40 Assorted		14451	61748
No. 45-80 Assorted		14452	61749
No. 90-140 Assorted		14453	61750

*Not available in Europe.



Absorbent Points

SybronEndo Absorbent Points are presterilized and highly absorbent. They are made to remove moisture from prepared canals and are rigid enough to be easily inserted and withdrawn while keeping a firmly rolled shape. SybronEndo Absorbent Points are sized to correspond with the dimensions of SybronEndo standardized endodontic instruments.

Auxiliary Sizes	Box of 200	Cell Pack of 200
XX-Fine (XXF)		16215
X-Fine (XF)	13966	16216
Fine (F)	13967	16217
Medium (M)	13968	16218
Course (C)	13969	16219
X-Course (XC)	13970	16220
Assorted (XF, F, M, C)	13965	
Assorted (XF, F, M, C, XC)		16221

Standard Sizes	Box of 200	Cell Pack of 200
No. 80	13982	
No. 70	13981	
No. 60	13980	16231
No. 55	13979	16230
No. 50	13978	16229
No. 45	13977	16228
No. 40	13976	16227
No. 35	13975	16226
No. 30	13974	16225
No. 25	13973	16224
No. 20	13972	16223
No. 15	13971	16222

Xpress Sealers

Three of SybronEndo's classic sealers now boast a new delivery method to help simplify setup, delivery and cleanup. Sealapex®, Tubli-Seal™ and TubliSeal™ EWT are now available in automix syringes. These syringes offer easy mixing at your fingertips in a perfect 1:1 ratio without worry and without manual mixing. This innovative delivery adds efficiency, convenience and simplicity to a line of sealers that is already steadfast and dependable.

Sealapex Xpress (2 – 10.5g syringes)	33639
Tubli-Seal Xpress (2 – 10.7g syringes)	33640
TubliSeal EWT Xpress (2 – 10.8g syringes)	33641
50 mixing tips	33680





Sealapex



Tubli-Seal



Tubli-Seal EWT

Sealapex® is the original non-eugenol, Tubli-Seal™ is a paste/paste zinc calcium hydroxide polymeric root canal sealer that promotes rapid healing and hard tissue formation. Tubli-Seal™ is a paste/paste zinc oxide eugenol root canal sealer. It is light in color, nondarkening and radiopaque.

Sealapex	18432	Tubli-Seal	00340	Tubli-Seal EWT	25903
Bulk package contains: 24 sets of base and accelerator, 6 mixing pads	18589	Bulk package contains: 24 sets of base and accelerator, 6 mixing pads	01081		

Tubli-Seal™ EWT offers all of the benefits of Tubli-Seal with the added benefit of a longer working time.

Mixing pads	28366
-------------	-------

Pulp Canal Sealer & Pulp Canal Sealer EWT

Pulp Canal Sealer™ is a zinc oxide eugenol sealer that has a powder base and liquid catalyst. It is a non-toxic and non-irritating formulation that is very radiopaque. Pulp Canal Sealer™ EWT features a work time of greater than 6 hours on the pad.

Pulp Canal Sealer	24875
Pulp Canal Sealer EWT	24746
Case Lot Powder Refill	24745
Case Lot Liquid Refill	24873



MiniEndo II

The MiniEndo II is a sleek, compact ultrasonic unit designed specifically for endodontic applications and to deliver the right amount of power and amplitude at the tip to successfully complete endodontic procedures.



MiniEndo II Ultrasonic Unit Type S, 110v 973-0236

Accessories

- Wrench for Ultrasonic Tips 973-0096
- MiniEndo Handpiece (M3x.6) Type S 973-0201



Ultrasonic Tip Introductory Kit

The Ultrasonic Tip Introductory Kit contains an assortment of four tips that are perfect for exploring the benefits of ultrasonics. Each kit contains one: SP-2, Scaler, CT-4 and Diamond-Coated CT-4.



Ultrasonic Tip Introductory Kit 973-1000

The “4” Series

The “4” series is designed for troughing around posts and opening calcified canals.

- UT-4 973-0039
- SJ-4 973-0041
- CT-4 973-0057



Spreader Tips

Longer than our “4” series, Spreader Tips are designed for troughing within the canal. Spreader Tips can trough around posts or break open a calcification. They also can be used to help retrieve separated files that are stuck in the apical third of the canal.

- SP-1 Small Spreader Tip 973-0063
- SP-2 Medium Spreader Tip 973-0065
- SP-3 Ultra-Fine Spreader Tip 973-0067



BUC Tips*

BUC-1 AND BUC-1A

The BUC-1 can be used for gross dentin removal, moving access line angles, cutting a groove in the mesial access wall to drop into MB2 canals, and for quickly and carefully unroofing pulp chambers. Its radiused tip geometry also allows effortless entry into each canal orifice and facilitates the creation of a smoothly troughed surface, which is helpful in finding reclusive MB2s. Use at power level 1-3.

BUC-2 AND BUC-2A

The BUC-2, with its disk-like radiused tip, can be used to smoothly and safely plane attached pulp stones from the pulp chamber floor without scoring it. In molars, it can be used to horizontally smooth the pulp chamber floor without cutting past it to get to the darker colored dentin. The smaller version BUC-2A has a 1.0mm diameter and can be used for corners of molar access prep and bicuspid access prep.

BUC-3 AND BUC-3A

The BUC-3 is an extremely active instrument with a sharp tip. It is used for chasing canals halfway up a root or for digging around a post or carrier-based obturator to remove it. It has a water port placed near the cutting surface of the tip for increased washing and cooling of the operative site.

BUC-1	973-0401	BUC-3	973-0404
BUC-1A	973-0406	BUC-3A	973-0407
BUC-2	973-0402	BUC (set of 6 tips)	973-0405
BUC-2A	973-0403		

*Not available in all countries. Contact SybronEndo for availability.

BK-3 Tips

Our BK-3 surgical tips have three bends for easy access to any preparation, including MB2 canals. BK-3s provide excellent visibility and can finish an entire prep with one tip. Water is directed down the three bends to the surgical site.

- BK3-R Upper Right/Lower Left Tip 973-0110
- BK3-L Upper Left/Lower Right Tip 973-0112



Specialty Tips

ST 973-0074

Scaler tip used to break away cement or calculus. The ST-1 is similar to the CT-4 except for its curvature for better access in difficult-to-reach areas within the tooth structure.

VT 973-0069

The vibrator tip is designed to vibrate a post out, vibrate a crown or bridge off or help seat a crown.

CK 973-0061

The Carr-Kanter Back-Action Ultrasonic Tip is used to reach tough areas such as MB2 canals.



UT Tips

- UT-1 Initiating Tip**

973-0033

Straight-line tip with 90° angle used to initiate the preparation.
- UT-2 Universal Right Tip**

973-0035

Angled tip for use on upper right and lower left to complete the prep.
- UT-3 Universal Left Tip**

973-0037

Angled tip for use on upper left and lower right to complete the prep.



SJ Tips

- SJ-1 Initiating Tip**

973-0084

Straight-line tip with 90° angle used to initiate the preparation.
- SJ-2 Slim Jim Right Tip**

973-0078

Angled tip for use on upper right and lower left to complete the prep.
- SJ-3 Slim Jim Left Tip**

973-0080

Angled tip for use on upper left and lower right to complete the prep.



CT Tips

- CT-1 Initiating Tip**

973-0059

Straight-line tip with 90° angle used to initiate the preparation.
- CT-2 Main Right Tip**

973-0053

Angled tip for use on upper right and lower left to complete the prep.
- CT-3 Main Left Tip**

973-0055

Angled tip for use on upper left and lower right to complete the prep.



Diamond-Coated Ultrasonic Tips

Our most popular Ultrasonic Tips are also available with a diamond coating, improving their cutting efficiency and durability.

- CT-4 Straight-Line Tip (our most popular)**

973-1057
- CT-1 Initiating Tip**

973-1059
- CT-2 Right Tip**

973-1053
- CT-3 Left Tip**

973-1054
- UT-4 Straight-Line Tip**

973-1039
- CK Carr-Kanter Back-Action Tip**

973-1060
- SP-2 Medium Spreader Tip**

973-1065
- BK3-R Upper Right/Lower Left Tip**

973-1110
- BK3-L Upper Left/Lower Right Tip**

973-1111



KiS Tip*



*Not available in all countries. Contact SybronEndo for availability.

KiS tips are diamond coated and have strategically placed irrigation ports for more precise control of irrigation solutions.

- KiS-1D**

973-1021

Angled 80° at the working end, this instrument is a general purpose tip for use on anterior and posterior areas – 0.5 mm diameter x 3.0 mm cutting surface.
- KiS-2D**

973-1022

Similar to the KiS-1D, this instrument is for larger diameter roots – 0.7 mm diameter x 3.0 mm cutting surface.
- KiS-3D**

973-1023

This double-angled 75° instrument is for use on the buccal root of the mandibular right molar and mesial buccal of the maxillary left molar – 0.5 mm diameter x 3.0 mm cutting surface.
- KiS-4D**

973-1024

This double-angled 110° instrument is for use on the lingual root of the mandibular left molar and distal buccal of the maxillary right molar – 0.5 mm diameter x 3.0 mm cutting surface.
- KiS-5D**

973-1025

A mirror image of the KiS-3D, this instrument is for use on the buccal roots of the mandibular left molar and mesial buccal of the maxillary right molar – 0.5 mm diameter x 3.0 mm cutting surface.
- KiS-6D**

973-1026

A mirror image of the KiS-4D, this instrument is for use on lingual roots of the mandibular right molar and distal buccal of the maxillary left molar – 0.5 mm diameter x 3.0 mm cutting surface.
- KiS set of 6**

973-1020

The set includes KiS-1D, KiS-2D, KiS-3D, KiS-4D, KiS-5D and KiS-6D.

RedStar Tips



RedStar Tips are innovative in ultrasonics. These tips provide a wide range of functionality and efficiency and are intended for use by both the novice clinician and the expert specialist.

- RedStar-1 Spreader Tip**

973-1040

- Helps remove cement around posts
 - Opens calcified canals
 - Removes isthmus tissue between canals



- RedStar-2 Planing Tip**

973-1041

- Removes pulp stones smoothly and safely from pulp chamber without scoring
 - Smooths the axial walls and floor of the pulp chamber
 - Shaves thin layers of dentin without cutting too deep



Developed in collaboration with Dr. Richard Mounce.

File Adapter

The File Adaptor, used with NiTi blanks or K-Files (sizes 15-35) without a handle, can be inserted into the chuck. It activates irrigant in the canal, thereby increasing the effect of irrigation by acoustic streaming.

- File Adapter**

973-0031

